

# RZM 15-0800

# RZM 18-0800

### Technical Data

Please note coloured area!

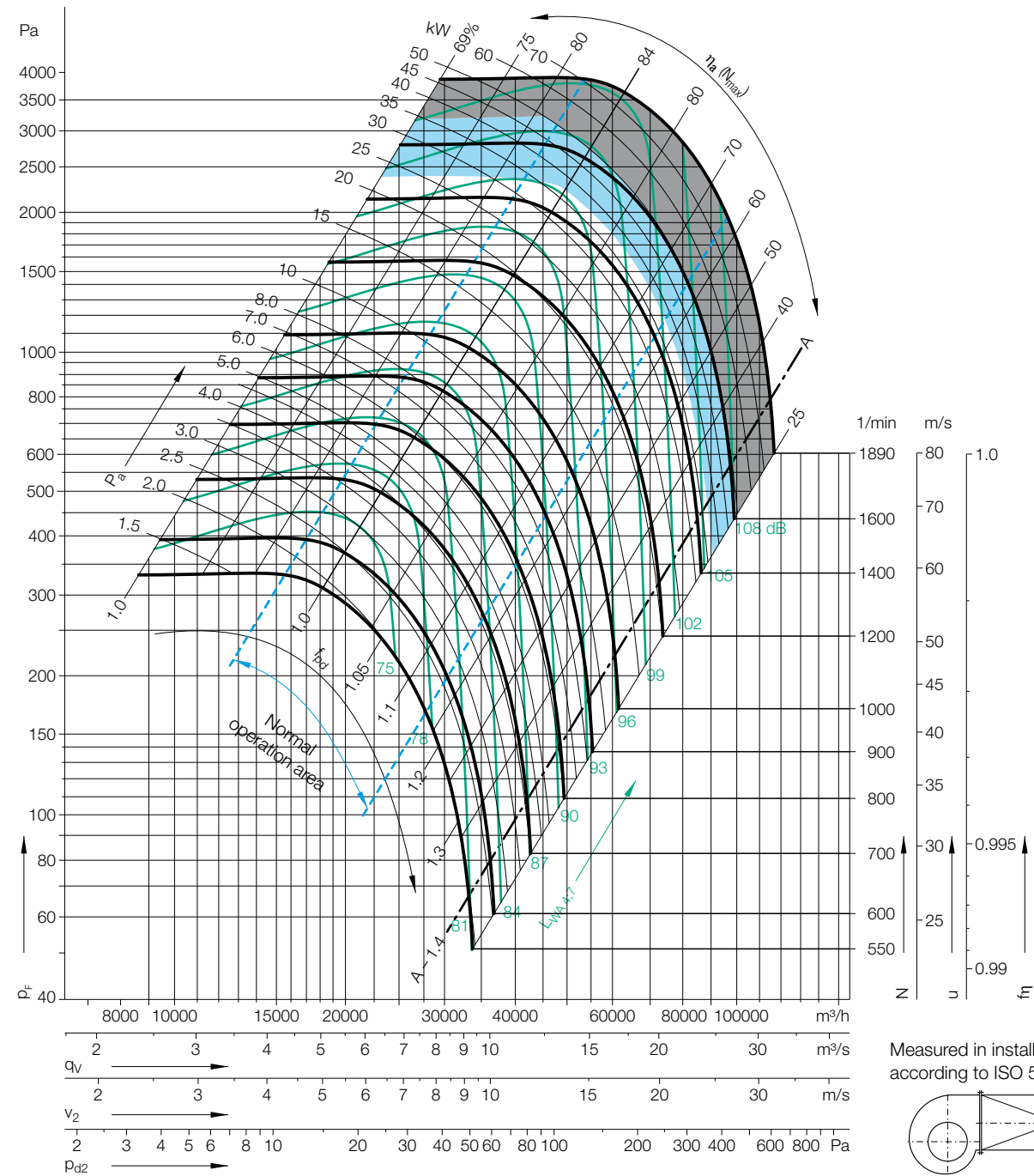
- all types suitable
- RZM 18 only
- do not use in this area

#### Impeller Data

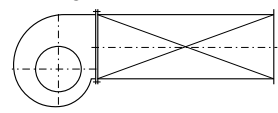
Impeller diameter	$D_r$	808 mm
Number of blades	$z$	12
Moment of Inertia	$J$	6.85 kgm <sup>2</sup>

#### Impeller Data

Impeller weight	$m$	69 kg
Density of media	$\rho_1$	1.2 kg/m <sup>3</sup>



Measured in installation B according to ISO 5801:



### Determination of the Octave level

Relative sound power level for **inlet side**  $L_{Wrel7}$  at octave band correction factors  $f_c$ .

Speed	Duty point
≤945 1/min	≤0.8 $q_{Vopt}$
	>0.8-1.2 $q_{Vopt}$
	>1.2-1.6 $q_{Vopt}$
	>1.6 $q_{Vopt}$
Speed	Duty point
>945 1/min	≤0.8 $q_{Vopt}$
	>0.8-1.2 $q_{Vopt}$
	>1.2-1.6 $q_{Vopt}$
	>1.6 $q_{Vopt}$

63	125	250	500	1000	2000	4000	8000	Hz
0	2	0	-3	-6	-9	-12	-19	dB
-2	1	-2	-3	-6	-8	-14	-20	dB
-3	0	-1	-3	-6	-8	-14	-21	dB
-5	-3	-3	-3	-6	-7	-13	-21	dB
63	125	250	500	1000	2000	4000	8000	Hz
-2	-1	-3	-1	-6	-10	-15	-21	dB
-7	-4	-5	-1	-6	-9	-14	-21	dB
-10	-7	-8	-1	-5	-8	-13	-21	dB
-10	-8	-8	-2	-6	-8	-11	-18	dB

Relative sound power level for **discharge side**  $L_{Wrel4}$  at octave band correction factors  $f_c$ .

63	125	250	500	1000	2000	4000	8000	Hz
13	7	4	-3	-8	-14	-17	-25	dB
10	5	3	-2	-7	-13	-17	-25	dB
7	2	2	-2	-6	-12	-18	-27	dB
5	1	1	-2	-6	-10	-17	-27	dB
63	125	250	500	1000	2000	4000	8000	Hz
11	4	2	0	-7	-12	-17	-24	dB
7	1	-2	-3	-6	-10	-15	-23	dB
3	-2	-4	-3	-5	-9	-14	-23	dB
2	-3	-5	-3	-5	-9	-12	-21	dB